

Threaded rods strength class 4.6, galvanised

Thread	Length [m]	Part no.	Sales unit	Pack unit
M6	1	113603	100	pieces
	2	113612	50	
M8	1	113639	25	
	2	113651		
	3	113660		
M10	1	113467	20	
	2	113486		
	3	113495		
M12	1	113513	10	
	2	113525		
	3	113534		
M16	1	113549	5	
	2	113561		
	3	113567		
M20	1	113579		
	2	113582		



Threaded pins galvanised

Connecting thread	Length [mm]	Part no.	Sales unit	Pack unit
M6	25	114094	100	pieces
	40	114097		
	70	114099		
	80	114103		
	100	114082		
M8	20	114149		
	30	114184		
	40	114211		
	50	114223		
	60	114241		
	70	114253		
	80	114262		
	90	114271		
	100	114115		
	110	114118		
	120	114128		
	140	114137		
M10	160	114140		
	180	114143		
	25	113762		
	35	113792		
	55	113825		
	80	113858		
	100	113699		
	120	113714		
M12	140	113723		
	160	113729		
	180	113744		
	25	113942		
	55	113983		
	80	114001		
M16	100	113882	25	
	130	113900		
	150	113915		
	60	114058		
	120	114016		
	160	114031		
	250	114046		



Hexagonal nuts

DIN 934, galvanised

Thread	Nut height [mm]	Spanner size [mm]	Part no.	Sales unit	Pack unit
M6	5.0	10	105484	100	pieces
M8	6.5	13	105498		
M10	8.0	17	105433		
M12	10.0	19	105447		
M16	13.0	24	105460		
M20	16.0	30	105469	25	



Hexagonal nuts

self-locking plastic ring, DIN 985, galvanised

Thread	Nut height [mm]	Spanner size [mm]	Part no.	Sales unit	Pack unit
M6	4.0	10	105525	100	pieces
M8	5.5	13	105531		
M10	6.5	17	105511		
M12	8.0	19	105517		



Cap nuts

DIN 1587, galvanised

Thread	Nut height [mm]	Spanner size [mm]	Part no.	Sales unit	Pack unit
M8	15	13	117119	100	pieces
M10	18	17	117060		
M12	22	19	117069		
M16	28	24	117080	50	
M20	34	30	117086	25	
M24	42	36	117089	5	



Protection caps

for the protection of threaded ends, with inner hexagon, plug on, black

For hexagonal nuts	Part no.	Sales unit	Pack unit
M8	105994	100	pieces
M10	105996		
M12	105998		



Washers

DIN 125, galvanised

For thread	Outer diameter [mm]	Thickness [mm]	Part no.	Sales unit	Pack unit
M6	12	1.6	127307	100	pieces
M8	16		127310		
M10	20	2.0	127277		
M12	24	2.5	127286		
M16	30	3.0	127295		

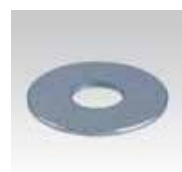


Washers

for MPC-Support channels, galvanised



For thread	Outer diameter [mm]	Thickness [mm]	Part no.	Sales unit	Pack unit	
M6	24	2	127244	100	pieces	
	36		127184			
M8	24		127253			
	36		127214			
M10	24		127079			
	29		127088			
	36		127121			
M12			127151			
M16	40		3			127169



Threaded rods strength class 4.6, galvanised

Thread	Length [m]	Part no.	Sales unit	Pack unit
M6	1	113603	100	pieces
	2	113612	50	
M8	1	113639	25	
	2	113651		
	3	113660		
M10	1	113467	20	
	2	113486		
	3	113495		
M12	1	113513	10	
	2	113525		
	3	113534		
M16	1	113549	5	
	2	113561		
	3	113567		
M20	1	113579		
	2	113582		



Threaded pins galvanised

Connecting thread	Length [mm]	Part no.	Sales unit	Pack unit
M6	25	114094	100	pieces
	40	114097		
	70	114099		
	80	114103		
	100	114082		
M8	20	114149		
	30	114184		
	40	114211		
	50	114223		
	60	114241		
	70	114253		
	80	114262		
	90	114271		
	100	114115		
	110	114118		
	120	114128		
	140	114137		
M10	160	114140		
	180	114143		
	25	113762		
	35	113792		
	55	113825		
	80	113858		
	100	113699		
	120	113714		
M12	140	113723		
	160	113729		
	180	113744		
	25	113942		
	55	113983		
	80	114001		
M16	100	113882	25	
	130	113900		
	150	113915		
	60	114058		
	120	114016		
	160	114031		
	250	114046		



Swivel hangers

galvanised

Field of application

- Attachment solution for suspended pipes – allows axial and lateral pipe movements
- Attachment of pipes with thermal, axial expansion
- Especially suitable for large ceiling distances

Advantages

- 360° degree of freedom
- Large deflection from the vertical
- Appropriate threaded rod lengths allow the pipes to be set to the desired height
- Screw-in depth of thread hanger allows precise height adjustment
- Screw-in depth visible through inspection hole (long version)
- Short version for low overall height



Swivel hanger, short



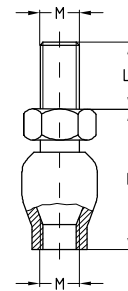
Swivel hanger, long



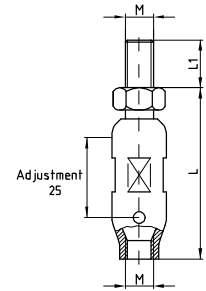
Features



Connecting thread	Max. recommended load [N]
M8	2,400
M10	3,000
M12	3,500



short version



long version

Type	Connecting thread	Overall height L [mm]	Threaded length L ₁ [mm]	Deflection from the vertical	Height adjustment up to [mm]	Part no.	Sales unit	Pack unit	
Short	M8	34	14	up to 12°	–	120231	100	pieces	
	M10	35	17			120227	50		
Long, with inspection hole	M12	70	19		25	120211	50		pieces
		61	57			120208			
	60	14	120204						
Long, greater deflection	M8	60	14		up to 22°	–	120223		50
		M10	61	17			120196		



For secure tilt-free pipe guides two swivel hangers – one at the top and one at the bottom – must be considered for each attachment point.

The threaded rod must be secured against loosening by the use of locknuts.

Steel anchors galvanised

Field of application

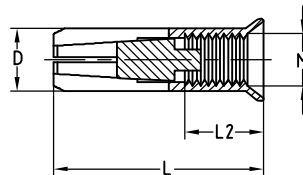
- For anchorages of medium-weight loads in concrete and natural stone (hard) in dry interiors of buildings
- Versatile and suitable for attachment with screws or threaded rods in all plumbing, heating and ventilation installations

Advantages

- Secure grip due to controlled splaying as the taper is driven in
- Requires only small drilling depth
- Flush finish with surface of the building material
- Secure expansion force even when the mounting screw is loosened
- European Technical Approval (ETA) for non-cracked and cracked concrete (reduced loads)
- If used the setting tools for check marking, test loading of the anchor is not required



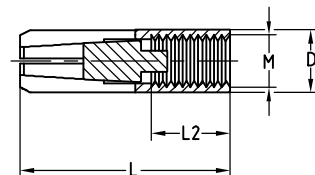
Steel anchor with collar



Steel anchor with collar



Steel anchor



Steel anchor

Features



								Multiple attachment of non-load bearing systems ETA approval	Non-cracked concrete, centrally tensile loaded ETA approval		
	Connecting thread	Anchor length L [mm]	Part no.	Sales unit	Pack unit	Drill-Ø D [mm]	Usable thread length [mm]	Drilled hole depth h ₀ [mm]	Approved load ¹⁾ [kN]	Drilled hole depth h ₀ [mm]	Approved load ²⁾ [kN]
Steel anchor	M6	30	129092	100	pieces	8	13	30	1.2	30	3.3 ³⁾
	M8		129093			10	1.7		2.8 ³⁾		
		40	129088		20	2.0	40	3.6			
	M10		129089		12	15		5.1			
	M12	50	129090	50	15	18	50	2.4	50	7.1	
Steel anchor with collar	M16	65	129091	25		20	23	65	6.3	65	10.5
	M8	30	149067	100		10	13	30	1.7	30	2.8 ³⁾
		40	150703			20	2.0	40	3.6 ³⁾		
	M10	30	149068		12	12	30		30	3.3 ³⁾	
		40	149325		15	15	40		40	5.1	
M12	50	150704	50	15	18	50	2.4	50	7.1		

¹⁾ Use as multiple attachment of non-load-bearing systems. The overall safety coefficient according to ETA is taken into consideration. The European Technical Approval 05/0161 shall be observed for dimensioning.

²⁾ The admissible loads apply for single anchors in concrete strength class $\geq C20/25$ (B25) for axially applied tension without the influence of axial and edge spacings. The safety coefficient according to ETA is included. The European Technical Approval 05/0160 shall be observed for dimensioning.

³⁾ Only for use in statically indeterminate systems.

i For the stainless steel version please refer to chapter „Stainless steel“. Please refer to the "Technical information" chapter for additional characteristic values, of plugs.

Through anchors galvanised

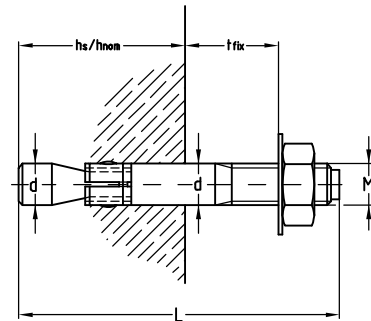
Field of application

- For anchorages of medium-weight loads in non-cracked concrete
- Attachment of metal and wood constructions, handrails, shelves and cable ducts
- Also applicable in hard natural stone

Advantages

- Quick handling: simply insert and tighten
- Practical through-fitting

- Splaying controlled by the tightening torque
- High security due to increasing splaying with increase in load
- European Technical Approval (ETA) for non-cracked concrete



Features




Type	Connecting thread	Clamping thickness t_{fix} [mm]	Overall length L [mm]	Part no.	Sales unit	Pack unit
St 6-10	M6	10	67	129513	100	pieces
St 6-25		25	82	129514		
St 8-10	M8	10	75	129516	50	pieces
St 8-20		20	85	129517		
St 8-45		45	110	129519		
St 10-10	M10	10	85	129490	50	pieces
St 10-20		20	95	129491		
St 10-50	M12	50	125	129493	25	pieces
St 12-20		20	115	129499		
St 12-30		30	125	129502		
St 12-65		65	160	129505		
St 12-85		85	180	129506		
St 12-105		105	200	129495		
St 12-145		145	240	129496		
St 12-160		160	255	129497		
St 12-190		190	285	129498		
St 12-230		230	325	129500		
St 12-260	M16	260	355	129501	10	pieces
St 16-30		30	150	129511		
St 16-80		80	200	129512		
St 16-100		100	220	129507		

Please refer to chapter "Stainless steel" for the stainless steel version.

Through anchors
galvanised

Type	Drill diameter d [mm]	Drilled hole depth [mm]	Uncracked concrete with central tensile load ETA approval		
			Standard anchoring depth h_{ef} [mm]	Setting depth h_s [mm]	Approved load ¹⁾ [kN]
St 6-10	6	55	40	49	4,1
St 6-25					
St 8-10	8	65	44	56	5,7
St 8-20					
St 8-45					
St 10-10	10	70	48	62	7,6
St 10-20					
St 10-50					
St 12-20	12	90	65	82	12,6
St 12-30					
St 12-65					
St 12-85					
St 12-105					
St 12-145					
St 12-160					
St 12-190					
St 12-230					
St 12-260					
St 16-30	16	110	82	102	17,8
St 16-80					
St 16-100					

¹⁾ The admissible loads apply for single anchors in concrete strength class $\geq C20/25$ for axially applied tension without the influence of axial and edge spacings. The safety coefficient according to ETA is included. The European Technical Approval shall be observed for dimensioning.
Reduced setting depth possible at reduced loads; see please the European Technical Approval 05/0162

 Please refer to chapter "Technical information" for additional characteristic values of plugs.



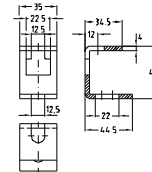
Threaded pipes galvanised

Thread	Length [m]	Part no.	Sales unit	Pack unit
½	2	113390	5	pieces
¾		113426		
1		113375		



Hanger bracket for quick hooking-in, with height adjustment, galvanised

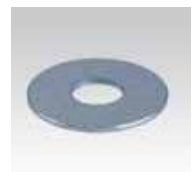
For threaded rods	Max. recommended load [N]	Part no.	Sales unit	Pack unit
M8–M12	1,200	106350	50	pieces



Washer for hanger bracket

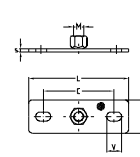
for use with threaded rods or threaded pins M8, galvanised

Dimensions [mm]	Part no.	Sales unit	Pack unit
8.5 x 20.5 x 2	127232	100	pieces



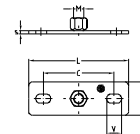
Base plates with hexagonal nut galvanised

Size L x b x s [mm]	Connection socket	Oblong holes V [mm]	Hole-centre distance C [mm]	Part no.	Sales unit	Pack unit
Size 1 (80 x 30 x 3)	M8	9 x 16	54	112407	50	pieces
	M10			112395		
	M12			112401		
Size 2 (120 x 40 x 4)	M8	11 x 19	80	112467		
	M10			112451		
	M12			112459		
	M16			112463		



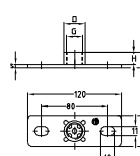
Base plates with combination nut galvanised

Size L x b x s [mm]	Connecting nut with dual-thread	Oblong holes V [mm]	Hole-centre distance C [mm]	Part no.	Sales unit	Pack unit
Size 1 (80 x 30 x 3)	M8/M10	9 x 16	54	112397	50	pieces



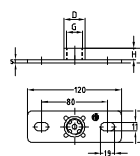
Base plates with connection socket galvanised

Size L x b x s [mm]	Connection socket [inch]	Oblong holes V [mm]	Hole-centre distance C [mm]	Part no.	Sales unit	Pack unit
Size 1 (80 x 30 x 3)	1/2	9 x 16	54	112389	50	pieces
Size 2 (120 x 40 x 4)	3/4			112435		
		11 x 19	80	112443		



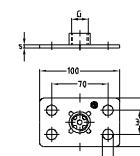
Base plates welded around galvanised

Size L x b x s [mm]	Connection socket [inch]	Oblong holes V [mm]	Hole-centre distance C [mm]	Part no.	Sales unit	Pack unit
Size 2 (120 x 40 x 4)	1/2	11 x 19	80	112807	50	pieces
	3/4			112809		
	1			112805		



Base plates with connection socket with four mounting holes, galvanised

Size L x b x s [mm]	Connection socket [inch]	Part no.	Sales unit	Pack unit
Size 3 (100 x 60 x 4)	1/2	112825	50	pieces
	3/4	112829		
	1	112817		



MPC-Support channels

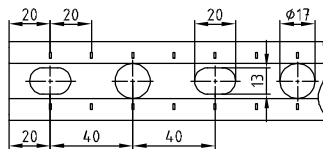
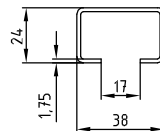
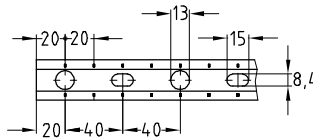
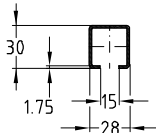
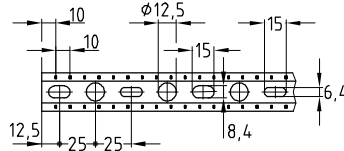
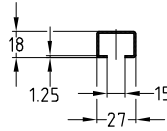
galvanised

Field of application

- Ideal for pipe installation as support structure for air ducts
- Variety of mounting options for pre-wall installations and shelves in combination with extensive range of system components

Advantages

- Quick and efficient attachment of pipe sections and multiple pipe-ways
- Scale marks on the sides and on the side with the slot simplify the alignment of the attachment elements during installation and facilitate the measuring and cutting to length of the section on site
- For secure fixing that is adjustable laterally and vertically
- High bending stiffness due to the cross-section design
- For setting up structures with correctly measured static loads by means of diverse connection components
- Suitable vibration control elements for all support channels available
- Clean-cut appearance by the use of protection caps



Profile 27/18



Profile 28/30



Profile 38/24

Profile	Length [mm]	Part no.	Sales unit	Pack unit
27/18	1,000	129883	25	pieces
	2,000	129911		
	6,000	130003		
28/30	2,000	118590	8	
	3,040	118692	1	
	4,000	118822	8	
	6,000	118994	1	
38/24	2,000	139920	10	
	6,000	139922	1	

MPC-Hammer head fasteners

galvanised

Field of application

- For time-saving, efficient attachment of pipe clamps to MPC-Support channels

Advantages

- Practical range of lengths
- For insertion at any point into the slot of channel support profiles 27/18 and 28/30
- Lateral adjustment at any time, allows perfect alignment of the pipeline after installation
- Various lengths and thread diameters can be combined within the same channel



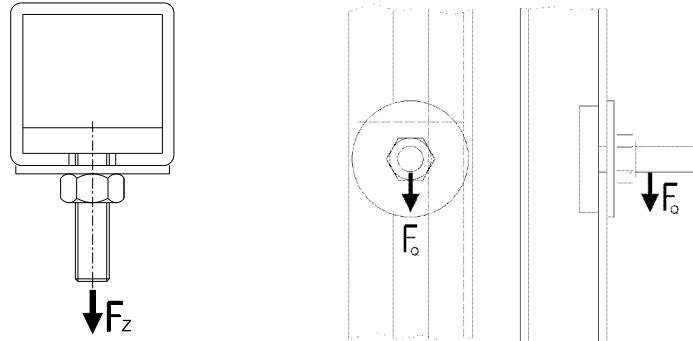
Features



For support channels	Connecting thread	Length [mm]	Usable thread length [mm]	Part no.	Sales unit	Pack unit		
27/18, 28/30	M8	20	7	115129	100	pieces		
		30	15	115152				
		40	25	115166				
		50	35	115175				
		60	45	115178				
		70	55	115181				
		80	65	115190				
		90	75	115193				
		100	85	115113				
		120	105	115116				
		140	125	115119				
		160	145	115122				
		180	165	115125				
			M10	35			18	115104
38/24-40/120	M8	25	7	115056	50			
		35	20	115074				
		40	25	115080				
		50	35	115092				
		80	65	115101				
		100	85	115035				
		120	105	115038				
		140	125	115041				
		160	145	115044				
		180	165	115047				
			M10	35			18	114990
				55			35	114999
				80			60	115002
				100			80	114963
		120		100			114966	
		140		120			114969	
			160	140			114972	
			180	160			114975	
		M12	35	15			115014	

MPC-Hammer head fasteners

galvanised



For support channels	Max. allowable bearing point load capacity of channel [N]	MPC-Hammer head fasteners			
		Connecting thread	Max. recommended tensile load Fz [N]	Max. recommended transverse load Fo (displacement) [N]	For a tightening torque of [Nm]
27/18	1,700	M8	1,000	400	10
		M10	1,700	1,200	30
28/30	2,500	M8	1,000	400	10
		M10	2,500	1,200	30

For support channels	Max. allowable bearing point load capacity of channel [N]	MPC-Hammer head fasteners			
		Connecting thread	Max. recommended tensile load Fz [N]	Max. recommended transverse load Fo (displacement) [N]	For a tightening torque of [Nm]
38/24	2,200	M8	1,000	600	20
		M10	2,200	800	30
38/40	5,000	M8	2,500	1,000	20
		M10	2,800	1,100	30
		M12	5,000	1,200	40
39/52	6,700	M8	3,000	1,000	20
		M10	3,300	1,100	30
		M12	6,700	1,200	40
40/60 40/80	8,300	M8	3,500	1,000	20
		M10	4,000	1,100	30
		M12	8,300	1,200	40
38/80	5,000	M8	2,500	1,000	20
		M10	2,800	1,100	30
		M12	5,000	1,200	40
40/120	8,300	M8	3,500	1,000	20
		M10	4,000	1,100	30
		M12	8,300	1,200	40

MPC-Wall hanger brackets

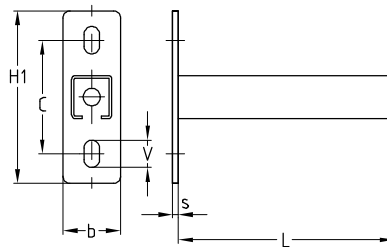
galvanised

Field of application

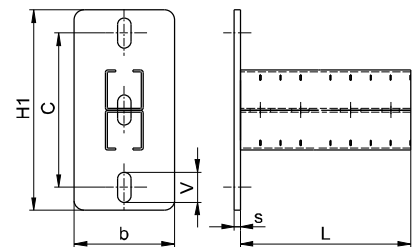
- Ideal as cantilever support structure of multisection pipeways
- Applicable as cantilever bracket for air ducts and cable trays
- Applicable in combination with saddle support and channel support brackets as a cross-beam for pipe attachments in shafts and ducts
- Solid wall bracket for valves and equipment
- The 38/80 profile is ideally suitable for double-sided installation of pipe sections due to double channel slots

Advantages

- The strong base plate ensures a high load carrying capacity
- The oblong holes in the base plate allow easy height adjustment of the bracket
- Variety of lengths covers all construction requirements
- Clean-cut appearance by the use of protection caps



Profiles 27/18, 28/30 and 38/40



Profiles 38/80 and 40/60

Features

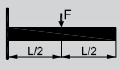
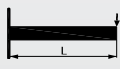
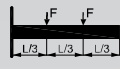
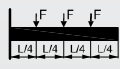


Profile	Length L [mm]	Part no.	Sales unit	Pack unit	Dimensions [mm]												
					H1	b	s	C	V								
27/18	200	118562	25	pieces	120	40	4	80	11 x 19								
	300	118656															
	500	118888															
28/30	240	118602	30	pieces			120			40	6	80	11 x 19				
	400	118771															
38/40	160	118518	25	pieces							120			40	6	80	11 x 19
	240	118604															
	320	118704															
	400	118775															
	480	118849															
	560	118908	20														
	640	119006	10														
	720	119050	1														
	800	119072															
	1,040	118453															
40/60	560	118940	20	pieces	200	100	8	155	13 x 30								
	640	119029															
	800	119090															
	1,040	118465															
38/80	400	118807	20	pieces						200	100	8	155	13 x 30			
	800	119087															

MPC-Wall hanger brackets

galvanised

Max. load capacities:

Profile	Length L [mm]	   			
		Max. allowable load [N]			
27/18	200	526	263	263	175
	300	350	143	175	116
	500	163	50	76	49
28/30	240	1,317	658	658	439
	400	787	393	393	262
38/40	160	4,597	2,298	2,298	1,532
	240	3,062	1,531	1,531	1,020
	320	2,294	1,147	1,147	764
	400	1,832	916	916	610
	480	1,524	762	762	508
	560	1,304	612	652	434
	640	1,138	467	569	379
	720	1,009	367	504	336
	800	905	296	444	287
	1,040	549	171	257	166
40/60	560	3,613	1,806	1,806	1,204
	640	3,156	1,578	1,578	1,052
	800	2,514	1,242	1,257	838
	1,040	1,918	727	959	639
38/80	400	5,465	2,732	2,732	1,821
	800	2,711	1,355	1,355	903



At the stated values, the max. admissible steel stress $\sigma_{adm.} = 160 \text{ N/mm}^2$ and the max. admissible deflection $L/150$ are not exceeded – dead weight has also been considered.

MPC-Rail nuts galvanised

For support channels	Thread	Length [mm]	Width [mm]	Height [mm]	Part no.	Sales unit	Pack unit
27/18, 28/30	M6	21.5	11.8	4	118013	100	pieces
	M8		14.0	5	120043		
38/24, 38/40, 39/52, 40/60, 40/80, 38/80, 40/120	M6	31.0	16.0	6	148757	25	
			23.0		148759		
	M8		16.0	148761			
			23.0	118040			
	M10		16.0	147854			
			23.0	117968			
M12		117986					
M16	32.5	32.5	8	148762			



Size 27/18
to 28/30



Size 38/24
to 40/120



MPC-Double rail nut galvanised

For support channels	Part no.	Sales unit	Pack unit
38/24, 38/40, 39/52, 40/60, 40/80, 38/80, 40/120	117944	50	pieces



MPC-Clamp brackets galvanised

For support channels	For thread	Part no.	Sales unit	Pack unit
27/18, 28/30	M8	114439	100	pieces
	M10	114503		
38/24, 38/40, 38/48, 38/80	M8	114447	25	
	M10	114450		
39/52, 40/60, 40/80, 40/120	M8	114471		
	M10	114474		
	M12	114477		
	M16	114459		



MPC-Clamp bracket heavy-duty to transfer large forces, galvanised

For support channels	For thread	Part no.	Sales unit	Pack unit
39/52, 40/60, 40/80, 38/80, 40/120	M10/M12	114557	25	pieces



MPC-Protection caps

For support channels	Part no.	Sales unit	Pack unit
27/18	106000	100	pieces
28/30	106002		
38/24, 38/48	106004	50	
38/40, 38/80	106006		
39/52	106007	25	
40/60, 40/120	106008		
40/80	106009		

